

PART OF THE NE.1/4, OF SECTION 28, T.6N., R.2E., S.L.B. & M.

160

# ARROWHEAD MEADOW PH1

IN WEBER COUNTY

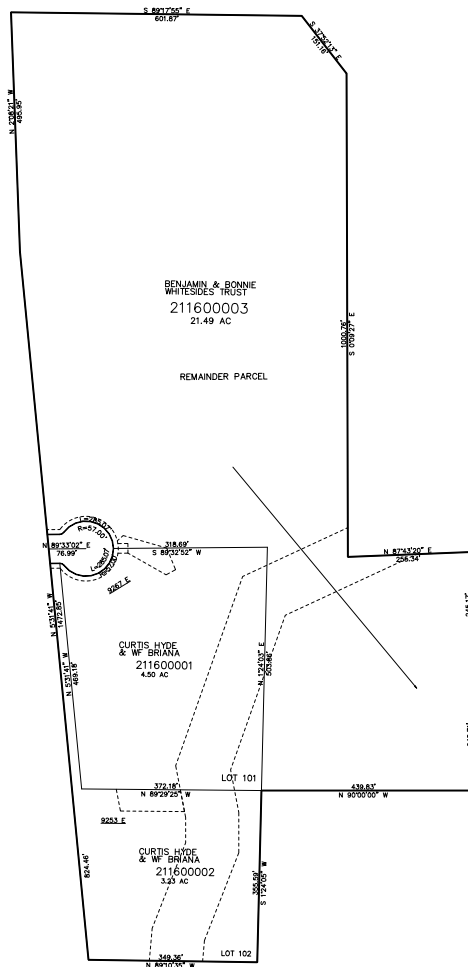
SCALE 1" = 200'

TAXING UNIT: 520

SEE PAGE 37

SEE PAGE 37

SEE PAGE 37



10' UTILITY & DRAINAGE EASEMENTS EACH  
SIDE OF PROPERTY LINES AS INDICATED  
BY DASHED LINES EXCEPT AS OTHERWISE  
SHOWN.

SEE PAGE 37

FOR COMPLETE ENG DATA SEE  
ORIGINAL DEDICATION PLAT IN  
BOOK 88 PAGE 31 OF RECORDS.